

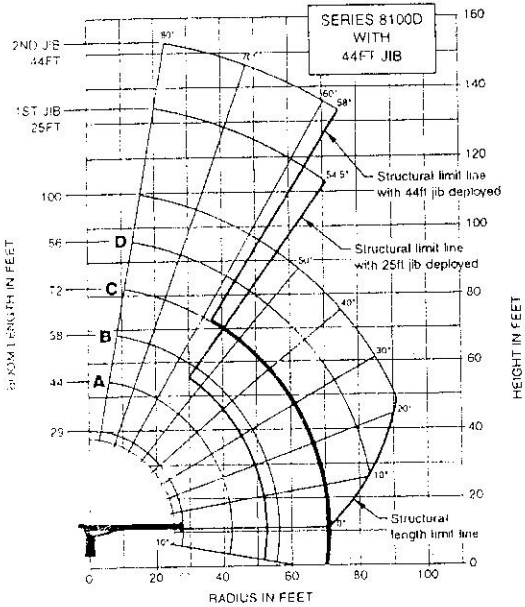
CAPACITY CHART

877921

93.30 (2370mm)

877921

NATIONAL CRANE CORPORATION



NOTE:

1. Operate with jib by radius when main boom is fully extended. If necessary increase boom angle to maintain loaded radius.
2. Operate with jib by boom angle when main boom is not fully extended. Do not exceed rated jib capacities at any reduced boom lengths.
3. Capacities do not exceed 85% stability.
4. Shaded areas are structurally limited capacities.

LMI OPERATING CODE	
OPERATING MODE	
01	Main Boom - No Jib Stowed
02	Main Boom - Jib Stowed
03	25 ft Tele Jib
04	44 ft Tele Jib
11	Man Basket On Main Boom
12	Man Basket On 25 ft Tele Jib
13	Man Basket On 44 ft Tele Jib

LOAD RATINGS

LOAD RADIUS (FEET)	LOADED BOOM ANGLE	29FT BOOM (lb)	LOADED BOOM ANGLE	A 44FT BOOM (lb)	LOADED BOOM ANGLE	B 58FT BOOM (lb)	LOADED BOOM ANGLE	C 72FT BOOM (lb)	LOADED BOOM ANGLE	D 86FT BOOM (lb)	LOADED BOOM ANGLE	100FT BOOM (lb)
5	73	46,000										
8	72.5	30,700	79	27,900								
10	66	25,500	75	23,200								
12	63.5	21,800	73.5	19,700	78	18,050						
14	59	19,000	70.5	17,200	76	15,750	79.5	14,350				
16	54	16,700	68	15,200	74	13,850	77.5	12,850				
20	45	13,400	61	12,200	69.5	11,250	74.5	10,350	77.5	9,550	80	7,450
25	25	9,700	54	9,700	64	8,950	70	8,250	74	7,650	77	7,100
30			45	7,900	58.5	7,350	66	6,850	70.5	6,150	74	5,850
35			35	6,300	53	6,100	61.5	5,600	67	5,200	71	4,900
40			20	4,600	46	5,100	56.5	4,750	63	4,400	67.5	4,250
45					38	4,250	51.5	4,050	59.5	3,800	64.5	3,850
50					28.5	3,400	46	3,450	55	3,250	61	3,150
55					14	2,200	40	2,900	51	2,800	57.5	2,650
60							33	2,350	46.5	2,400	54	2,300
65							24	1,800	41	2,000	50	1,850
70							6.5	700	35.5	1,600	46	1,650
75									29	1,250	42	1,350
80									20	800	37	1,050
85											32	800
90											25	500
	0	5,100	0	2,300	0	950						

LOAD RADIUS (FEET)	LOADED BOOM ANGLE	25FT JIB (lb)	LOADED BOOM ANGLE	44FT JIB (lb)
30	78	3,900	80	2,750
35	75.5	3,400	78	2,500
40	73	2,800	76	2,250
45	70.5	2,350	74	2,000
50	68	1,850	72	1,850
55	65	1,500	70	1,600
60	62.5	1,300	67.5	1,350
65	60	1,100	65	1,050
70	57	750	63	950
75	54.5	600	60.5	800
80			58	600

LOADLINE EQUIPMENT DEDUCT (lb)

- Downtail weight _____ 150
- One sheave block _____ 305
- Two sheave block _____ 355
- Three sheave block _____ 575

ADD TO CAPACITIES WHEN NO JIB STOWED (lb)	800	600	450	350	300	250
---	-----	-----	-----	-----	-----	-----

1 PART LINE	2 PART LINE	3 PART LINE	4 PART LINE	5 PART LINE	6 PART LINE
MAX. PULL 7,700 lb	MAX. PULL 15,400 lb	MAX. PULL 23,100 lb	MAX. PULL 30,800 lb	MAX. PULL 38,500 lb	MAX. PULL 46,000 lb

NOTICE

- Do not deadhead line block against boom tip when extending boom.
- Keep at least 3 wraps of loadline on drum at all times.
- Use only 9/16" diameter rotation resistant cable with 38,500 lb breaking strength on this machine.
- Maximum capacity with "burst of speed" is 3,000 lb

23 TON BOOM

INSTALLATION

SPECIFICATION (DIMENSIONAL SPECIFICATI

	G	DRY WEIGHT *	W/OIL WEIGHT *
869D	63 in [160 cm]	14,830 lb [6727 kg]	15,350 lb [6963 kg]
880D	56 in [142 cm]	15,500 lb [7031 kg]	16,020 lb [7266 kg]
890D	68 in [173 cm]	16,465 lb [7488 kg]	16,985 lb [7704 kg]
8100D	78 in [201 cm]	17,180 lb [7797 kg]	17,710 lb [8033 kg]

* - ABOVE WEIGHTS DO NOT INCLUDE SUBBASE, RESERVOIR, FRONT OR REAR STABILIZERS, JIBS, PTO, PUMP, BED, BOOM RESTS, REAR BUMPER, OR ANY OTHER MOUNTING OR CRANE OPTIONS.

SUBBASE	WEIGHT	C. G.
STANDARD 18'	2,975 lb [1348 kg]	108.25 in [275 cm]
STANDARD 20'	3,175 lb [1440 kg]	120.50 in [306 cm]
STANDARD 22'	3,445 lb [1563 kg]	143.25 in [364 cm]

SUBBASE C. G. ARE LOCATED FROM THE CENTERLINE OF ROTATION.

16' [4.87 m] SPAN RSOD 1,300 lb [590 kg]

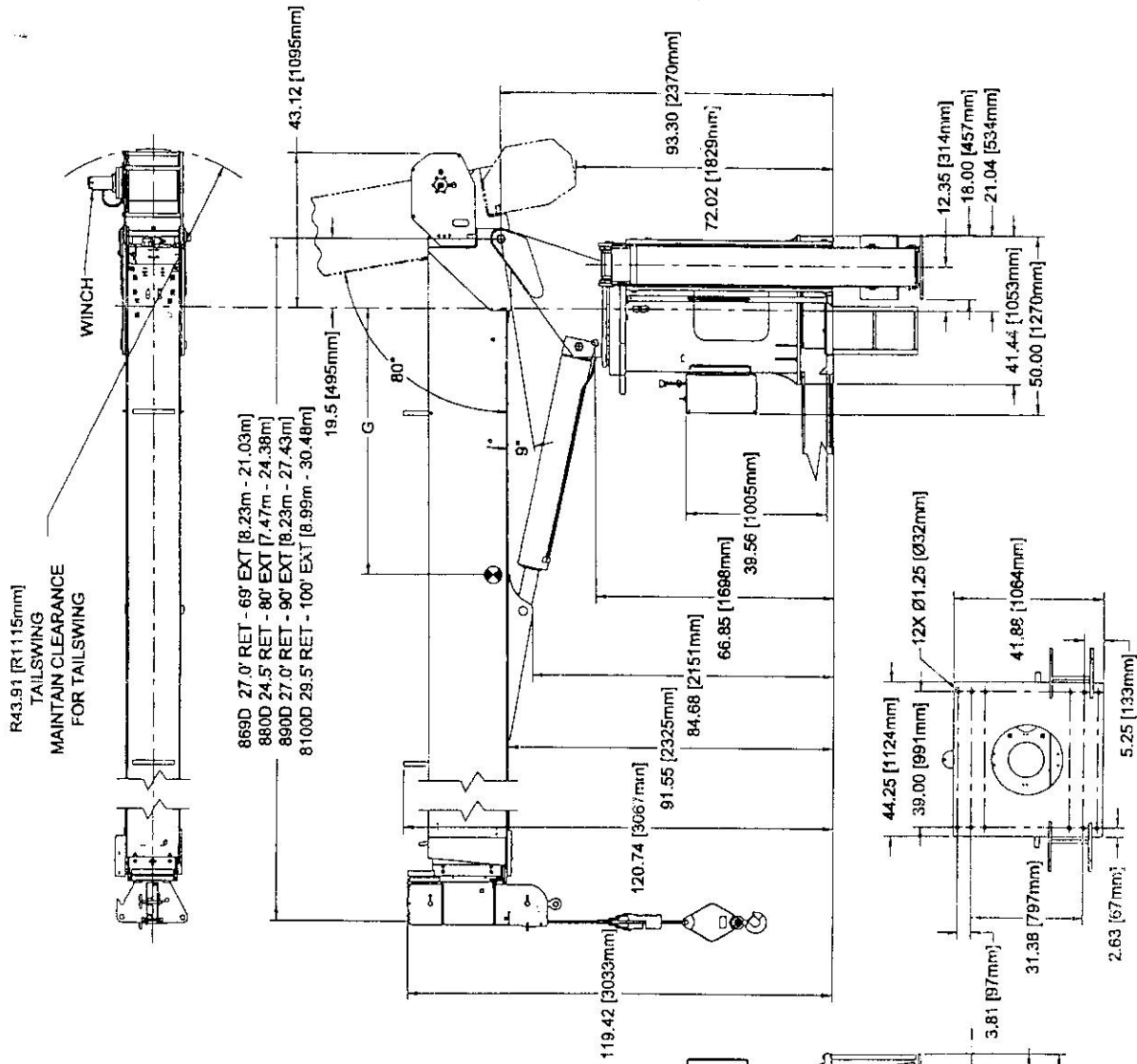
MAX RATED LOAD MOMENT
4,648,000 in-lb [525 266 N·m]

MAX RATED ROTATIONAL TORQUE
405,200 in-lb [45 781 N·m]

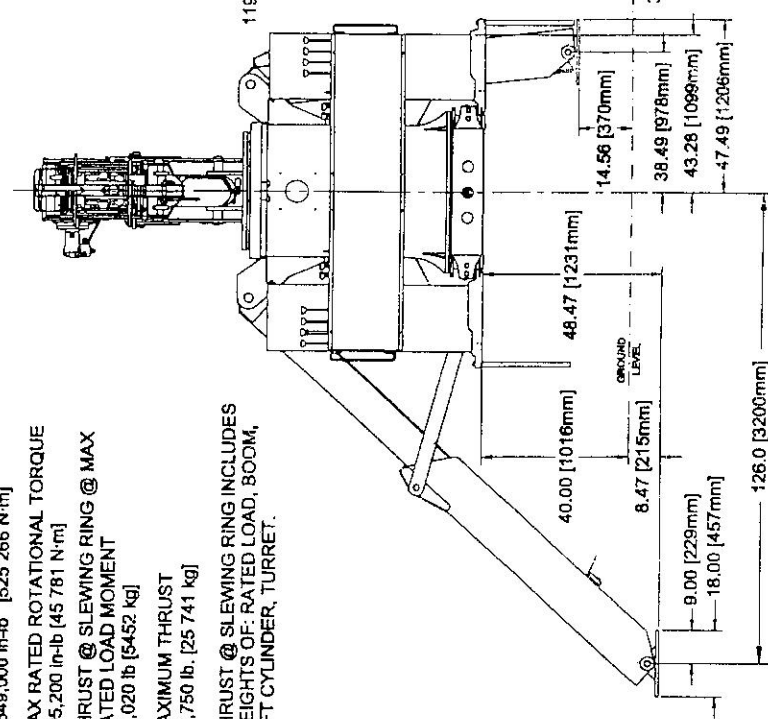
THRUST @ SLEWING RING @ MAX
RATED LOAD MOMENT
12,020 lb [5452 kg]

MAXIMUM THRUST
56,750 lb [25 741 kg]

THRUST @ SLEWING RING INCLUDES
WEIGHTS OF: RATED LOAD, BOOM,
LIFT CYLINDER, TURRET.



BOTTOM VIEW
SOME COMPONENTS
REMOVED FOR CLARITY



23 TON Boom

INSTALLATION